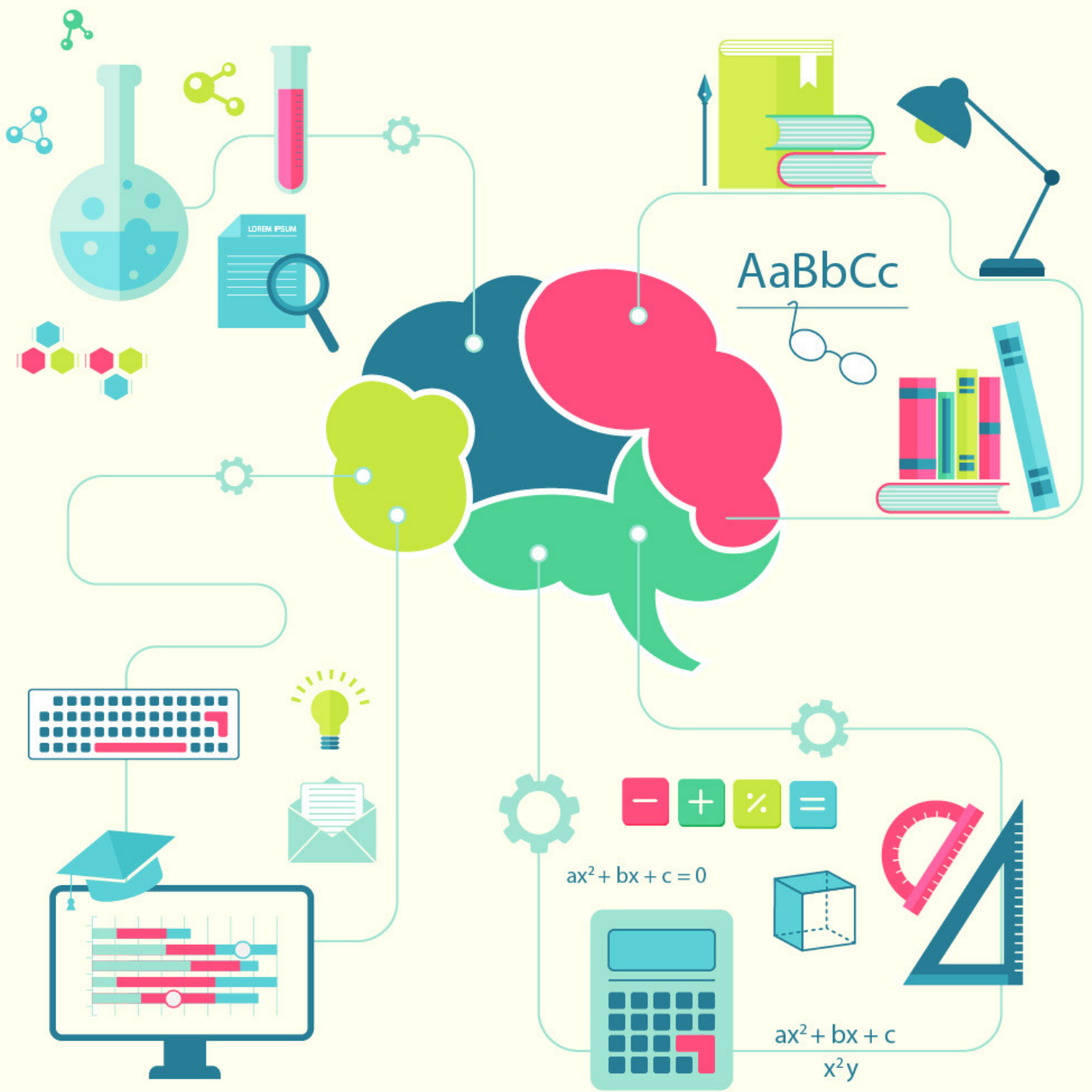


cracku

Syllogism Questions For Railway Group-D PDF





TAKE CRACKU'S FREE GROUP-D MOCK TEST

Instructions: In each of following questions have the respective statements and related conclusions .you have to take given statement is as correct and answer the following questions

Question 1:

Statements:

All chillies are garlicks
Some garlicks are onions
All onion are potatoes
No potato is ginger
Conclusions:
No onion is ginger
Some garlic are potatoes
Some chillies are potatoes

- a) only I follows
- b) only II follows
- c) only I and II follows
- d) only I and III follows
- e) all follows

Question 2:

Statements:

Some keys are locks
Some locks are numbers
All numbers are letters
All letters are words
Conclusions:
Some locks are letters
Some words are numbers
All numbers are words

- a) only I and II follow
- b) only II and III Follow
- c) only I and III follow
- d) only I either II or III follow
- e)all follows

[Download PDF]

Geography Important Question For Railway Exam - Group-D

GK Notes For

Railway Group-D Exam

Free GK Tests Download Our App





SOLVE GROUP-D QUESTION PAPERS

Question 3:

Statements:

Some windows are doors

All doors are walls

No wall is a roof

All roofs are shelters

Conclusions:

Some windows are walls

No wall is shelter

No door is shelter

- a) None follows
- b) only II and III follows
- c) only I and III follows
- d) only I follows
- e) None of these

Question 4:

Railway Group-D Syllabus PDF

Statements:

All bottles are jars

Some jars are pots

All pots are taps

No tap is tank

Conclusions:

I. No pot is tank

II. Some jars are pots

III. Some bottles are pots

- a) only I and III follow
- b) only I and II follows
- c) only II and III Follows
- d) None of these
- e) ALL follows

History Important Question for Railway Exam-Group-D

Free GK Tests Download Our App





Question 5:

Statements

Some fish are crocodiles

Some crocodiles are snakes

No snake is tortoise

All tortoises are frogs

Conclusions:

No snake is frog

Some snakes are fish

Some fish are frogs

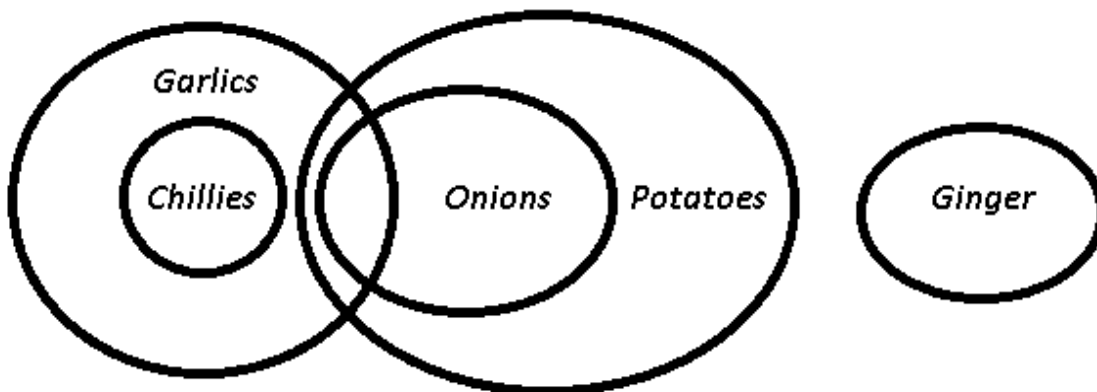
- a) None follows
- b) Only I and II follow
- c) only II and III follow
- d) only I and III follow
- e) None of these

Railway Group-D Previous Papers

Answers & Solutions:

1) Answer (C)

The venn diagram for above statements is :



Conclusions:

No onion is ginger = true

Some garlic are potatoes = true

Some chillies are potatoes = false

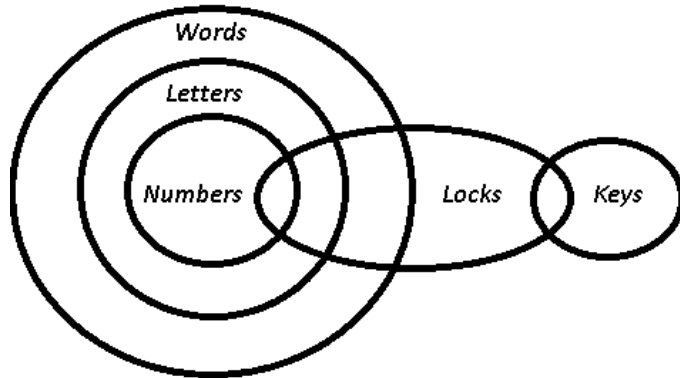
Thus, only I and II follows.

=> Ans - (C)



2) Answer (E)

The venn diagram for above statements is :



Conclusions:

Some locks are letters = true

Some words are numbers = true

All numbers are words = true

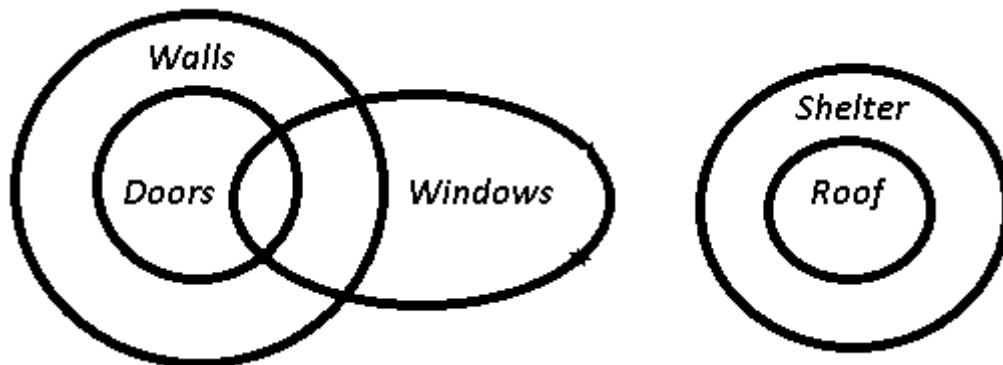
Thus, all follows.

=> Ans - (E)

RRB Group-D Notification 2018

3) Answer (D)

The venn diagram for above statements is :



Conclusions:

Some windows are walls = true

No wall is shelter = may be true

No door is shelter = may be true

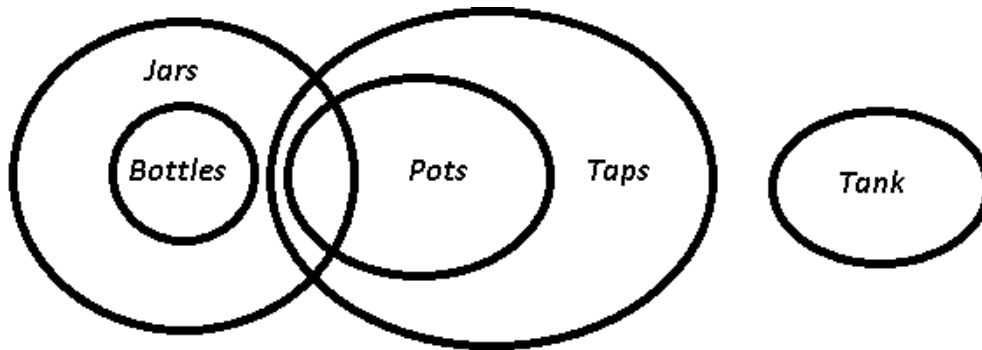
Thus, only I follows.

=> Ans - (D)



4) Answer (B)

The venn diagram for above statements is :



Conclusions:

I. No pot is tank = true

II. Some jars are pots = true

III. Some bottles are pots = false

Thus, only I and II follows.

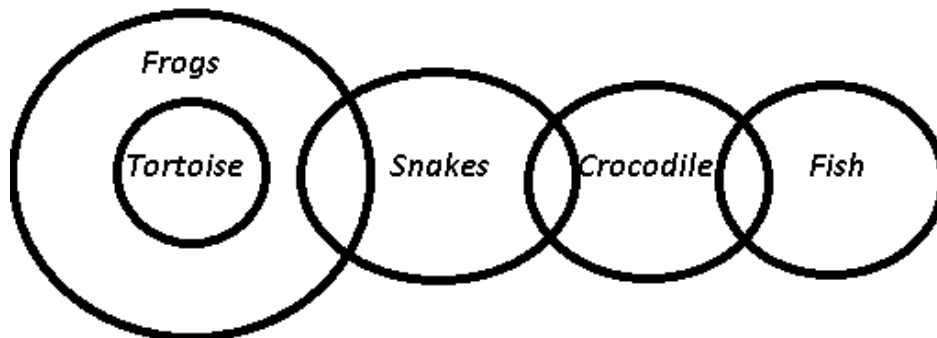
=> Ans - (B)

[\[Download PDF\]](#)

Geography Important Question For Railway Exam - Group-D

5) Answer (A)

The venn diagram for above statements is :



Conclusions:

No snake is frog = false

Some snakes are fish = false

Some fish are frogs = false

Thus, none follows.

=> Ans - (A)

**Whatsapp 'RRB' to join in Group
to this number (7661025557)**