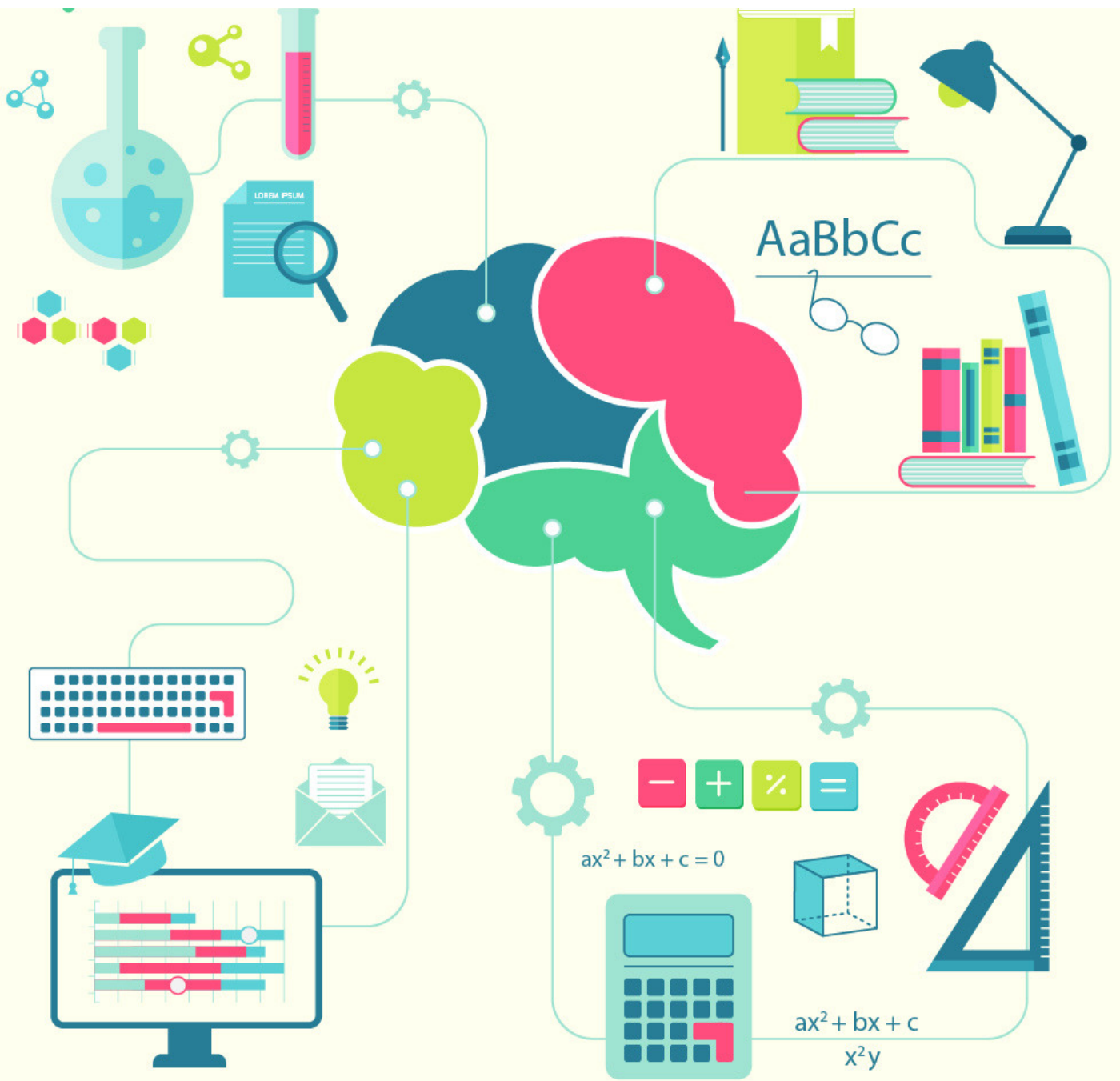


# cracku

## Coded Inequality Questions for SBI Clerk

28 Feb 2018





# TAKE CRACKU'S FREE CAT MOCK

## Instructions: 1 to 5

In the following questions, the symbols \$, @, #, ^ and \* are used with the following meaning as illustrated below.

'P \$ Q' means 'P is not smaller than Q'.

'P @ Q' means 'P is neither smaller than nor equal to Q'.

'P # Q' means 'P is neither greater than nor equal to Q'.

'P ^ Q' means 'P is neither greater than nor smaller than Q'.

'P \* Q' means 'P is not greater than Q'.

Now in each of the following questions assuming the given statements to be true, find which of the four conclusions I, II, III and IV given below them is/are definitely true and give your answer accordingly.

## CAT 2018 preparation tips for beginners

### Question 1:

Statements: H @ T, T # F, F ^ E, E \* V

Conclusions:

I. V \$ F

II. E @ T

III. H @ V

IV. T # V

- a) Only I, II and III are true
- b) Only I, II and IV are true
- c) Only II, III and IV are true
- d) Only I, III and IV are true
- e) All I, II, III and IV are true

IIFT Free Previous Papers  
Download Our App





# SOLVE PAST CAT PAPERS

## Question 2:

Statements:  $D\#R$ ,  $R*K$ ,  $K@F$ ,  $F\$J$

Conclusions:

- I.  $J \# R$
- II.  $J \# K$
- III.  $R \# F$
- IV.  $K @ D$

- a) Only I, II and III are true
- b) Only II, III and IV are true
- c) Only I, III and IV are true
- d) All I, II, III and IV are true
- e) None of these

## Previous Year CAT LR Questions

## Question 3:

Statements:  $N \wedge B$ ,  $B \$ W$ ,  $W \# H$ ,  $H * M$

Conclusions :

- I.  $M @ W$
- II.  $H @ N$
- III.  $W \wedge N$
- IV.  $W \# N$

- a) Only I is true
- b) Only III is true
- c) Only IV is true
- d) Only either III or IV is true
- e) Only either III or IV and I are true



# TAKE CRACKU'S FREE CAT MOCK

## Question 4:

Statements:  $R * D$ ,  $D \$ J$ ,  $J \# M$ ,  $M @ K$

Conclusions:

- I.  $K \# J$
- II.  $D @ M$
- III.  $R \# M$
- IV.  $D @ K$

- a) None is true
- b) Only I is true
- c) Only II is true
- d) Only III is true
- e) Only IV is true

## CAT Questions on Circles

## Question 5:

Statements:  $M \$ K$ ,  $K @ N$ ,  $N * R$ ,  $R \# W$

Conclusions:

- I.  $W @ K$
- II.  $M \$ R$
- III.  $K @ W$
- IV.  $M @ N$

- a) Only I and II are true
- b) Only I, II and III are true
- c) Only III and IV are true
- d) Only II, III and IV are true
- e) None of these



# TAKE CRACKU'S FREE CAT MOCK

## Instructions: 6 to 10

In the following questions, the symbols \$, @, #, ^ and \* are used with the following meaning as illustrated below.

'P \$ Q' means 'P is not smaller than Q'.

'P @ Q' means 'P is neither smaller than nor equal to Q'.

'P # Q' means 'P is neither greater than nor equal to Q'.

'P ^ Q' means 'P is neither greater than nor smaller than Q'.

'P \* Q' means 'P is not greater than Q'.

Now in each of the following questions assuming the given statements to be true, find which of the four conclusions I, II, III and IV given below them is/are definitely true and give your answer accordingly.

### Question 6:

Statements: H @ T, T # F, F ^ E, E \* V

Conclusions:

I. V \$ F

II. E @ T

III. H @ V

IV. T # V

- a) Only I, II and III are true
- b) Only I, II and IV are true
- c) Only II, III and IV are true
- d) Only I, III and IV are true
- e) All I, II, III and IV are true

### Question 7:

Statements: D#R, R\*K, K@F, F\$J

Conclusions:

I. J # R

II. J # K

III. R # F

IV. K @ D

- a) Only I, II and III are true
- b) Only II, III and IV are true
- c) Only I, III and IV are true
- d) All I, II, III and IV are true
- e) None of these

## Tough Reading Comprehension Passages for CAT

IIFT Free Previous Papers  
Download Our App





# TAKE CRACKU'S FREE CAT MOCK

## Question 8:

Statements:  $N \wedge B$ ,  $B \$ W$ ,  $W \# H$ ,  $H * M$

Conclusions :

I.  $M @ W$

II.  $H @ N$

III.  $W \wedge N$

IV.  $W \# N$

a) Only I is true

b) Only III is true

c) Only IV is true

d) Only either III or IV is true

e) Only either III or IV and I are true

## Question 9:

Statements:  $R * D$ ,  $D \$ J$ ,  $J \# M$ ,  $M @ K$

Conclusions:

I.  $K \# J$

II.  $D @ M$

III.  $R \# M$

IV.  $D @ K$

a) None is true

b) Only I is true

c) Only II is true

d) Only III is true

e) Only IV is true

## Question 10:

Statements:  $M \$ K$ ,  $K @ N$ ,  $N * R$ ,  $R \# W$

Conclusions:

I.  $W @ K$

II.  $M \$ R$

III.  $K @ W$

IV.  $M @ N$

a) Only I and II are true

b) Only I, II and III are true

c) Only III and IV are true

d) Only II, III and IV are true

e) None of these

IIFT Free Previous Papers  
Download Our App





# TAKE CRACKU'S FREE CAT MOCK

## Solutions (1 to 5)

### 1) Answer (b)

Substituting the symbols based on the directions we get

$$H > T, T < F, F = E, E \leq V$$

$$= H > T < F = E \leq V$$

Now the options are

$$V \geq F, E > T, H > V, T < V$$

Following the rules for coded inequalities in the concept section we find that I, II, IV are correct

So option B is right

### 2) Answer (e)

From the question  $D < R \leq K > F \geq J$

These conclusions given are  $J < R, J < K, R < F, K > D$

As per the rules given in the coded inequalities of the banking concept, II:  $J < K$ , IV:  $K > D$  are correct.

But there is no option as such.

Hence d : None of these is the right choice.

### 3) Answer (e)

From the question  $N = B \geq W < H \leq M$

The conclusions given are  $M > W, H > N, W = N, W < N$

As per the rules given in the coded inequalities section of Banking Concepts, options I :  $M > W$  is correct and III :  $W = N$ , IV :  $W < N$  are partially correct.

So Option E : Only either III or IV and I are true is correct



# TAKE CRACKU'S FREE CAT MOCK

## 4) Answer (a)

From the statements given,  $R \leq D \geq J < M > K$

The conclusions given are  $K < J$ ,  $D > M$ ,  $R < M$ ,  $D > K$

We know that both J and K are lesser than M, but we don't know whether  $J > K$  or not. Hence, the first conclusion is wrong.

Similarly, we know that both M and D are greater than, but we don't know which of the two M and D is greater.

We know that D is greater than R, but as we don't know whether D is greater or lesser than M, we don't know whether M is greater than R or not.

In the same way, the relationship between M and K is known, but as the relationship between M and D is not known, we can't comment about the relationship between D and K

Hence, all the conclusions are wrong.

## 5) Answer (e)

From the question  $M \geq K > N \leq R < W$

The conclusions given are  $W > K$ ,  $M \geq R$ ,  $K < W$ ,  $M > N$

We know that both W and K are greater than N, but the relationship between the two of them is not known. Hence, the first conclusion is wrong.

Similarly, M and R are greater than N, but the relationship between the two of them is not known.

Similarly, K and W are greater than N, but the relationship between the two of them is not known.

M is greater than or equal to K which is in turn greater than N, hence  $M > N$  and the fourth conclusion is correct.

So, of the four options, none of them is correct.

## Solution (6 to 7)

## 6) Answer (b)

Substituting the symbols based on the directions we get

$H > T$ ,  $T < F$ ,  $F = E$ ,  $E \leq V$

$= H > T < F = E \leq V$

Now the options are

$V \geq F$ ,  $E > T$ ,  $H > V$ ,  $T < V$

Following the rules for coded inequalities in the concept section we find that I, II, IV are correct

So option B is right





# TAKE CRACKU'S FREE CAT MOCK

## 7) Answer (e)

From the question  $D < R \leq K > F \geq J$

These conclusions given are  $J < R$ ,  $J < K$ ,  $R < F$ ,  $K > D$

As per the rules given in the coded inequalities of the banking concept, II:  $J < K$ , IV:  $K > D$  are correct.

But there is no option as such.

Hence d : None of these is the right choice.

## 8) Answer (e)

From the question  $N = B \geq W < H \leq M$

The conclusions given are  $M > W$ ,  $H > N$ ,  $W = N$ ,  $W < N$

As per the rules given in the coded inequalities section of Banking Concepts, options I :  $M > W$  is correct and III :  $W = N$ , IV :  $W < N$  are partially correct.

So Option E : Only either III or IV and I are true is correct

## 9) Answer (a)

From the statements given,  $R \leq D \geq J < M > K$

The conclusions given are  $K < J$ ,  $D > M$ ,  $R < M$ ,  $D > K$

We know that both J and K are lesser than M, but we don't know whether  $J > K$  or not. Hence, the first conclusion is wrong.

Similarly, we know that both M and D are greater than, but we don't know which of the two M and D is greater.

We know that D is greater than R, but as we don't know whether D is greater or lesser than M, we don't know whether M is greater than R or not.

In the same way, the relationship between M and K is known, but as the relationship between M and D is not known, we can't comment about the relationship between D and K

Hence, all the conclusions are wrong.

## 10) Answer (e)

From the question  $M \geq K > N \leq R < W$

The conclusions given are  $W > K$ ,  $M \geq R$ ,  $K < W$ ,  $M > N$

We know that both W and K are greater than N, but the relationship between the two of them is not known. Hence, the first conclusion is wrong.

Similarly, M and R are greater than N, but the relationship between the two of them is not known.

Similarly, K and W are greater than N, but the relationship between the two of them is not known.

M is greater than or equal to K which is in turn greater than N, hence  $M > N$  and the fourth conclusion is correct.

So, of the four options, none of them is correct.

[11FT Free Previous Papers](#)

[Download Our App](#)





# SOLVE PAST CAT PAPERS

Data Interpretation and Logical  
Reasoning Questions for CAT

Whatsapp 'CAT' to join in  
CAT Group to this number  
(7661025559)

XAT Free Previous Papers  
Download Our App

