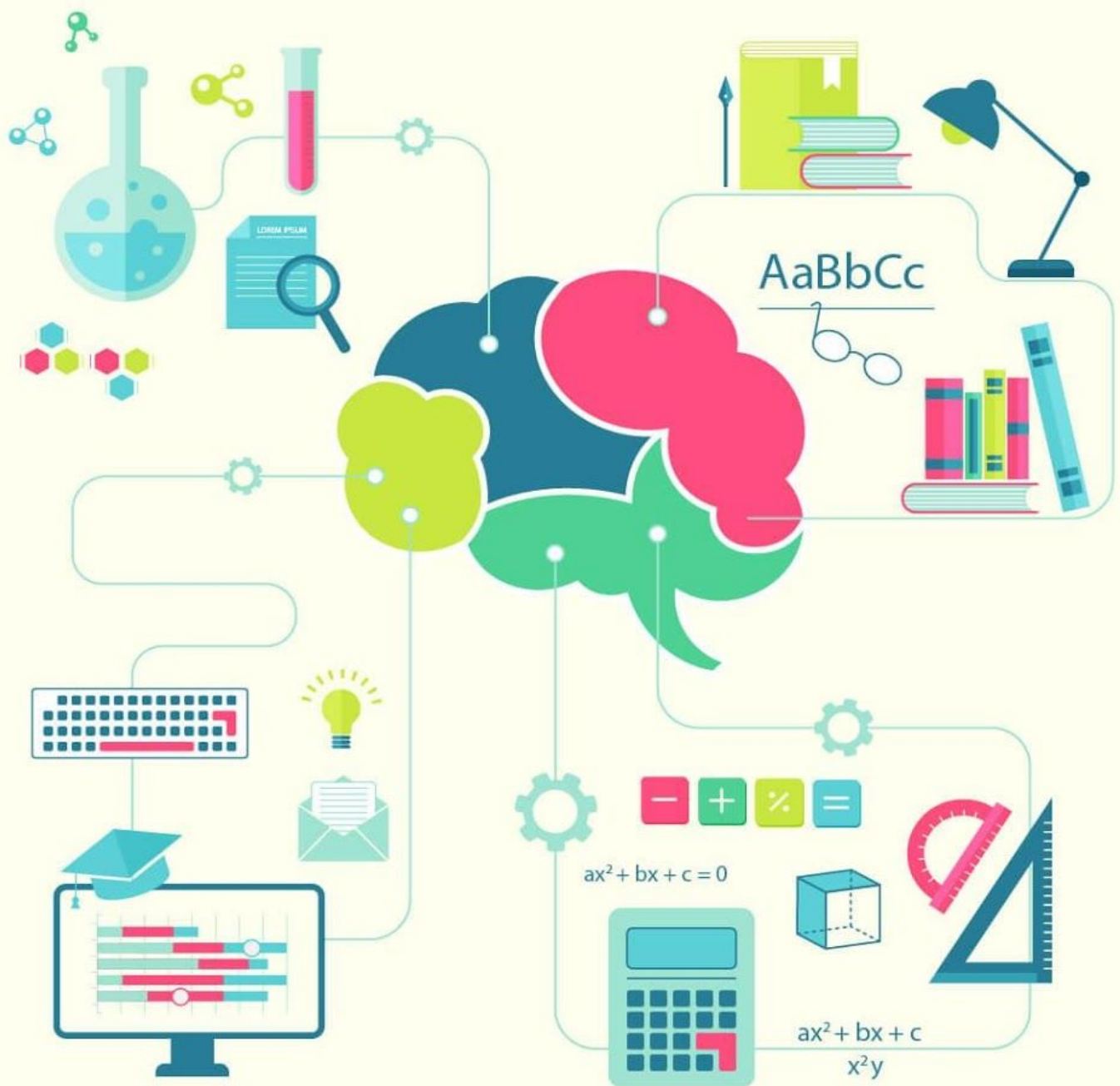


cracku



#	NAME OF THE NATIONAL PARK	DISTRICT	COMMENT
1	Eravikulam National Park	Idukki(Munnar)	A unique aspect of this national park is the blooming of the Neelakurinji, a plant that blooms once every 12 years, and turns the entire forest a deep shade of blue.
2	Anamudi shola National park	Idukki District	The rich wildlife includes Elephant, Tiger, Panther, Indian Bison, Nilgiri tahr, Gaur, Spotted Deer, Sambar, Giant Grizzled Squirrel, Hanuman Langur, Sloth Bear, Flying Squirrels etc.
3	Mathikettan shola National park	Poopara village of Udumbanchola taluk in Idukki district	Elephants are the famous animals in this park
4	Pampadum shola National park	Devikulam taluk, Idukki district	The famous species here are Nilgiri marten, Nilgiri wood pigeon, Nilgiri langur, Nilgiri flycatcher, Blue rock-thrush
5	Peeeriyar National park	Thekkady,Idukki district	Periyar National Park and Wildlife Sanctuary is notable as both as a elephant reserve and a tiger reserve.

[Take Free SSC CGL Mock Test](#)

6	Silent valley national park	Palakkad district	The British named the area Silent Valley because of a perceived absence of noisy cicadas.
---	-----------------------------	-------------------	---

ANDHRA PRADESH

1	Sri venkateswara national park	chittor	Sloth bears are frequently encountered. Sambar, spotted deer, mouse deer, barking deer, four-horned antelope and wild boar are the main ungulates.
---	--------------------------------	---------	--

ARUNACHAL PRADESH

#	NAME OF THE NATIONAL PARK	DISTRICT	COMMENT
1	Mouling National Park	Uppar Siang	It was built in 1986. Animals such as the takin, goral, Indian leopard, Bengal tiger, barking deer, serow and red panda are living there.

2	Namdapha National Park	Changlang district	It is only park in the World to have the four Feline species of big cat namely the Tiger (Panthera Tigris), Leopard (Panthera Pardus), Snow Leopard (Panthera Uncia) and Clouded Leopard (Neofelis Nebulosa) and numbers of Lesser cats.
---	------------------------	--------------------	--

ASSAM

1	Manas National Park	Baksa	The park is known for its rare and endangered endemic wildlife such as the Assam roofed turtle, hispid hare, golden langur and pygmy hog. Manas is famous for its population of the wild water buffalo.
2	Kaziranga National Park	Golaghat and Nagaon districts in Assam	The sanctuary hosts two-thirds of the world's great one-horned rhinoceroses and is a UNESCO World Heritage Site.

[Take Free SSC CGL Mock Test](#)

3	Dibru-saikhowa National park	Dibrugarh and Tinsukia districts	Dibru-Saikhowa National Park is ideal for birdwatchers and bird photographers as it is home to many unique species of birds. These include greater adjutant, grey heron, yellow bittern, Asian openbill, black stork, whistling-duck, fish-eagle, spot-billed pelican, white-winged wood duck, hornbill,
4	Nameri National Park	sonitpur	Nameri is the best sighting spot of the endangered bird White- winged Duck (Asarcornis scutulata), which is also the state bird of Assam. Ibisbill and Merganser are the two species of migratory birds that visit the park every winter.
5	Dehing Patkai National park	Dibrugarh	The Dehing Patkai Wildlife Sanctuary was declared as Dehing-Patkai Elephant Reserve under Project Elephant.

6	Orang National park	Darrang and Sonitpur districts	Orang is also known as the mini-Kaziranga, because of its similar landscape of marshes, streams and grasslands. Like Kaziranga, it is also inhabited by the one-horned rhinoceros. The Park has a rich flora and fauna, including the pygmy hog, elephant, wild buffalo and tiger
---	---------------------	--------------------------------	---

BIHAR

1	Valmiki national park	West champaran district	It is the only national park in Bihar
---	-----------------------	-------------------------	---------------------------------------

Chhattisgarh

1	Guru Ghasidas (Sanjay) National Park	Koriya district	Established in 1981. Guru Ghasidas National Park is one of the most famous tiger reserves in the region and is highly reputed amongst national parks in the country. Also known as Sanjay National Forest in Madhya Pradesh, this national park shares its boundaries both with Madhya Pradesh as well as Chhattisgarh.
---	--------------------------------------	-----------------	---

[Take Free SSC CGL Mock Test](#)

2	Indravati national park	Bijapur	Established in 1982.It is home to one of the last populations of rare wild buffalo
3	Kanger valley national park	Jagdalpur	Established in 1982.The national park is very famous for the long subterranean geomorphological limestone caves and is a major tourist attraction in the region. All limestone caves are present north of Kanger River between Madarkonta and Kodri Bahar. These are Kutumsar cave, Kailash Cave, Dandak Cave, Devgiri Cave

GOA

	Mollem National park	South goa	Established in 1978.he area covered by the sanctuary is heavily forested and contains pristine vegetation known as West Coast tropical evergreen forests, West Coast semi-evergreen forests and moist deciduous forests.
--	----------------------	-----------	--

GUJARAT

1	Vansda National Park	Navsari District	Established in 1979. Animals found in the park include the Indian leopard, dhole, rhesus macaque, common palm civet, Hanuman langur, small Indian civet, four-horned antelope, wild boar, Indian porcupine, barking deer, striped hyena, jungle cat, flying squirrel, pangolin and Indian giant squirrel.
2	Blackbuck (Velavadar) National Park	Bhavnagar	Established in 1976.
3	Gir National Park	Junagadh District, Gir Somnath District and Amreli Districts in Gujarat	It is a forest and wildlife sanctuary and home to the Asiatic lions.
4	Marine (Gulf of Kachchh) National Park	It lies 1 to 10 km away from the east coast of Tamil Nadu, South India for 160 km between Thoothukudi (Tuticorin) and Dhanushkodi.	It consists of 21 small islands and coral reefs in the Gulf of Mannar in the Indian Ocean of Tamil Nadu. The park has a high diversity of plants and animals in its marine and shore habitats. Dugong (Sea Cow), a vulnerable marine mammal is also found here.

[Take Free SSC CGL Mock Test](#)

HARYANA

1	Kalesar National Park	Yamunanagar district	Kalesar is a popular destination for leopards, panthers, elephants, red jungle fowl and bird-watching
2	Sultanpur National Park	Gurgaon	Sultanpur National Park is also known as Sultanpur Bird Sanctuary. Sultanpur National Park is a bird paradise for bird watchers. Park is famous for its migratory as well as resident birds

HIMACHAL PRADESH

1	Great Himalayan National Park	Kullu region	The Great Himalayan National Park is the habitat for the largest known population of the Western Tragopan, an endangered species of pheasants
2	Inderkilla National Park	Kullu region	Inderkilla National Park which is located in Himachal Pradesh is well-known for being a habitat to the most magnificent species of animals i.e. the Tigers.
3	Khirganga National Park	Kullu region	Famous for Wild bears

4	Pin Valley National Park	Kaza valley	This park is specially renowned for the protection of endangered Snow-Leopard
5	Simbalbara National Park	Dhaura Kuan	Simbalbara National park is famous for its unique and diverse wildlife and bird species. It is home to Goral, Sambhar, Spotted Deer, Chital, Himalayan black bear, Hanuman langurs, Indian muntjacs and many other animals.

JAMMU AND KASHMIR

1	Salim ali national park	Srinagar	The park is named after the famous ornithologist Dr Salim Ali. The park is famous for its avian fauna.
2	Dachigam National Park	Srinagar	The park is best known as the home of the hangul, or Kashmir stag.
3	Kishtwar National Park	Kishtwar district	The national park in Kishtwar attracts wildlife lovers with its rich flora & fauna which comprises musk deer and Himalayan brown bear.

[Take Free SSC CGL Mock Test](#)

JHARKHAND

1	Betla National Park	Latehar district	Betla” is an acronym of the following words: bison, elephant, tiger, leopard, axis-axis(Chital).
---	---------------------	------------------	--

KARNATAKA

1	Anshi National Park	Uttara kannada district	tiger, leopard, black panther, bear, elephant are the famous animals.
2	Bandipur National Park	80km south to mysore	Bandipur National Park established in 1974 as a tiger reserve under Project Tiger, is a national park located in the Indian state of Karnataka, which is the state with the second highest tiger population in India
3	Bannerghatta National Park	Bengaluru urban	The biological park is a zoological reserve named for Y. M. L Sharma, a Conservator of Forests of Karnataka, who petitioned for the creation of the park. It shelters mammals such as Indian tigers (including white tigers) and lions.

4	Kudremukh National Park	chikmagalur	The Kudremukh National park houses variety of wildlife such as tiger, leopard, wild dog, Malabar giant squirrel, common langur, sloth bear, gaur, porcupine, sambar, spotted deer, barking deer, jackal, giant flying squirrel and the mongoose.
5	Nagarahole (Rajiv Gandhi) National Park	kodagu	Established in 1955 and made into a national park in 1988, Nagarhole National Park is also known as Rajiv Gandhi National Park. ... The Park is currently being considered by UNESCO for selection as a World Heritage Site. It is also known as Nagarhole Tiger Reserve.

[Take Free SSC CGL Mock Test](#)

MADHYA PRADESH

1	Bandhavgarh National Park		In 1968 the area got its status of a National Park and now has become one of the preferred parks for Tiger Safari in India that includes photographing and tracking Tigers in the wild. The park is known to have World's highest density of Bengal Tigers.
2	Fossil National Park	Mandla	This site is rich in fossils, said to be around sixty million years old
3	Indira Priyadarshini Pench National Park		The park is famous for rafting. The Pench national park has a count of 8 tigers (as in 1998) and 7 panthers (as in 1998). The Pench National park is the home to a wide variety of flora and fauna. It is dominated by fairly open canopy, mixed forests with considerable shrub cover and open grassy patches

4	Kanha National Park	Mandla	Kanha National Park was created on 1 June 1955 and in 1973 was made the Kanha Tiger Reserve. The park has a significant population of the Royal Bengal tiger, Indian leopards, the sloth bear, barasingha and Indian wild dog.
5	Madhav National Park		The forest is home to antelopes like Nilgai, Chinkara and Chowsinga and Deer including Chital, Sambar and Barking Deer. Animals like the Leopard, Wolf, Jackal, Fox, Wild Dog, Wild Pig, Porcupine, Python etc are also sighted in the park.
6	Panna National Park	Chhatarpur district	Fauna. Among the animals found here are the tiger, leopard, chital, chinkara, nilgai, sambhar and sloth bear. The park is home to more than 200 species of birds including the bar-headed goose, honey buzzard, king vulture, blossom-headed parakeet, changeable hawk-eagle and Indian vulture.

[Take Free SSC CGL Mock Test](#)

7	Sanjay National Park	Sidhi	The National park was established in 1975. The world famous white tigers "MOHAN" was found and rescued from the forest of this landscape by Maharaja of Rewa in 1951
8	Satpura National Park	Hoshangabad	Satpura National Park is rich in biodiversity. The animals here include leopard, sambar, chital, Indian muntjac, nilgai, four-horned antelope, Chinkara, wild boar, bear, black buck, fox, porcupine, flying squirrel, mouse deer, and Indian giant squirrel. There are a variety of birds.
9	Van Vihar National Park	Bhopal	The animals, such as the Bengal tiger, Asiatic lion, Asiatic wildcat, Indian wolf, Sloth bear, Red fox, Indian jackal, wild dog are famous

MAHARASHTRA

1	Chandoli National Park		It's one of India's largest National Park spread over 4 districts of Maharashtra Sangli, Satara, Kolhapur, Ratnagiri. The Area of Forest is mostly bigger in Region of Sangli district. The Chandoli National Park is Famous for Shayari Tiger Reserve, Rare Species of Plants, Animal
2	Gugamal National Park	Amravati	Bengal tiger, Indian leopard, sloth bear, Ussuri dhole, Indian jackal, striped hyena, chausinga, sambar (largest Deer on earth) gaur, barking deer, ratel, flying squirrel, cheetal (type of deer), nilgai, wild boar, langur, rhesus monkey, and macaque.
3	Navegaon National Park	Gondia	The bird sanctuary, known as Dr Salim Ali Bird Sanctuary houses almost 65% of the bird species that are found in the state of Maharashtra. Flocks of stunning migratory birds visit the park every winter and unwind by the lake – an eye-catching view.

[Take Free SSC CGL Mock Test](#)

4	Pench (Jawaharlal Nehru) National Park	Nagpur	Pench National Park is known for its wildlife, flora and fauna. You can spot the Royal Bengal Tiger and Leopard here.
5	Sanjay Gandhi (Borivali) National Park	Thane	The forest cover in the park helps provide the ideal habitat for many wild animals. Chital (or spotted deer), rhesus macaque and bonnet macaque are some of the wild mammals often spotted inside the park.
6	Tadoba National Park	Chandrapur district	It is Maharashtra's oldest and largest national park.

MANIPUR

1	Keibul-Lamjao National Park	Bishnupur	The largest area of the Phumdi in the Loktak lake is in the Keibul Lamjao National Park, which is home to Manipur brow-antlered deer (<i>Rucervus eldi eldi</i>) also popularly known as the Sangai.
---	-----------------------------	-----------	--

MEGHALAYA

[Free Exam Material Telegram Group](#)

1	Balphakram National Park	Bhagramara	Balpakram is famous for its forest covered canyon-cum-gorge and numerous geo-physical formations, all of which makes the place a land of mystery. It is often compared to the Grand Canyon National Park of the United States of America, to the local Garo inhabitants, Balpakram is the abode of the spirits of the dead.
2	Nokrek Ridge National Park	West garo hills district	Nokrek has a remnant population of the red panda that has generated curiosity across the world

MIZORAM

1	Murlen National Park	Champhai	Forests of Murlen are home to a rich variety of flora and fauna. About 15 species of mammals, 150 species of birds, 35 species of Medicinal plants, 2 species of bamboo, and 4 species of orchids so far have been recorded in this Park.
---	----------------------	----------	---

[Take Free SSC CGL Mock Test](#)

2	Phawngpui Blue Mountain National Park	Lawngtlai district	It is famous for its exotic species of flora and fauna especially the orchids and rhododendrons spread within the valleys surrounding on all sides. The park is home for wildlife like Slow Loris, Tiger, Leopard, Leopard Cat, Serow, Goral, Asiatic Black Bear, Stump-tailed Macaque and Capped Langur
---	---------------------------------------	--------------------	--

NAGALAND

1	Intanki National Park	Peren	It is known to share the semi evergreen and deciduous forests of Intanki with other rare species like great hornbill, barking deer, sambar, sloth bear and not-seen-in-years clouded leopard.
---	-----------------------	-------	---

ODISHA

1	Bhitarkanika National Park	Paramanadapur	It hosts many mangrove species, and is the second largest mangrove ecosystem in India. The national park is home to Saltwater crocodile (<i>Crocodylus porosus</i>), Indian python, king cobra, black ibis, darters and many other species of flora and fauna.
2	Simlipal National Park	Mayurbhanj	Simlipal National Park derives its name from the abundance of red silk cotton trees growing in the area. It is the 7th largest national park in India. The park is home to Bengal tiger, Asian elephant, gaur, and chausingha. along with some of the beautiful waterfalls like Joranda and Barehipani Falls

RAJASTHAN

1	Mukundra Hills National Park	Hadoti	Mukundra Hills was declared a tiger reserve in 2013 with portions of wildlife sanctuaries of Kota, Bundi, Jhalawar and Chittorgarh.
2	Desert National Park	Kendrapara	The greatest

[Take Free SSC CGL Mock Test](#)

			attraction of the park is a bird called the great Indian bustard, a critically endangered species found only in India.
3	Keoladeo Ghana National Park	Bharatpur	Keoladeo National Park, located in the State of Rajasthan, is an important wintering ground of Palaearctic migratory waterfowl and is renowned for its large congregation of non-migratory resident breeding birds
4	Ranthambore National Park	Sawai Madhopur	Ranthambore National park is spread over an area of 392 sq km. along with its nearby sanctuaries like, the Mansingh Sanctuary and Kaila Devi Sanctuary. The park is majorly famous for its tigers
5	Sariska National Park	Alwar	Sariska Tiger Reserve is a tiger reserve in Alwar district, Rajasthan, India. It stretches over an area of 881 km ² (340 sq mi) comprising scrub-thorn arid forests, dry deciduous forests, grasslands, and rocky hills. This area was a hunting preserve of the Alwar state and was declared a wildlife

			reserve in 1955.
--	--	--	------------------

SIKKIM

1	Khangchendzonga National Park	North sikkim	Khangchendzonga National Park is home to nearly half of India's bird diversity, wild trees, orchids and rhododendrons and one third of the country's flowering plants. It contains the widest and most extensive zone of krummholz (stunted forest) in the Himalayan region.
---	-------------------------------	--------------	--

TAMILNADU

1	Guindy National Park	Chennai	Black buck, chital, jackal, pangolin and a variety of birds are the famous species.
2	Gulf of Mannar Marine National Park	Thoothukudi	The Gulf of Mannar endowed with three distinct Coastal ecosystems namely coral reef, seagrass bed and mangroves is considered one of the world's richest region from a marine biodiversity perspective, is known for its unique biological wealth and is a storehouse of marine diversity of global significance

[Take Free SSC CGL Mock Test](#)

3	Indira Gandhi (Annamalai) National Park	Tiruppur	Elephants are famous animals.
4	Mudumalai National Park	Nilgiris	The protected area is home to several endangered and vulnerable species including Indian elephant, Bengal tiger, gaur and Indian leopard. There are at least 266 species of birds in the sanctuary, including critically endangered Indian white-rumped vulture and long-billed vulture.
5	Mukurthi National Park	Nilgiri	It is home to an array of endangered wildlife, including royal Bengal tiger and Asian elephant, but its main mammal attraction is the Nilgiri tahr. The park was previously known as Nilgiri Tahr National Park.

LADAKH

1	Hemis national park	Eastern ladakh	Hemis National Park (or Hemis High Altitude National Park) is a high altitude national park in Ladakh, India. Globally famous for its snow leopards
---	---------------------	----------------	---

TELANGANA

1	Kasu Brahmananda Reddy National Park	Hyderabad	
---	--------------------------------------	-----------	--

[Free Exam Material Telegram Group](#)

2	Mahavir Harina Vanasthali National Park	Hyderabad	Mahavir Harina Vanasthali National Park is famous for being a home to the endangered species of Black Buck Deer.
3	Mrugavani National Park	Chilkur	It is home to a 600 different types of plant life. The Park is home to around 350 spotted deers.

TRIPURA

1	Clouded Leopard National Park	Bishalgarh, Sepahijala	It is home to four species of primate monkey including Phayre's langur.
2	Bison (Rajbari) National Park	Trishna	One can expect to come across various wild animals including the world-famous Indian Gaur (also known as bison), deer, Golden langurs, Pheasants, and many such endearing species. The Bison reserve was entrenched in the Sanctuary to protect the endangered species.

[Take Free SSC CGL Mock Test](#)

UTTAR PRADESH

1	Dhudhwa national park	Lakhimpur	Major attractions of Dudhwa National Park are the tigers (population 58 in 2014) and swamp deer (population over 1,600). Billy Arjan Singh successfully hand-reared and reintroduced zoo-born tigers and leopards into the wilds of Dudhwa.
---	-----------------------	-----------	---

UTTARAKHAND

1	Jim Corbett National Park	Nainital	Jim Corbett National Park is the oldest national park in India and was established in 1936 as Hailey National Park to protect the endangered Bengal tiger. It is located in Nainital district and Pauri Garhwal district of Uttarakhand and was named after hunter and naturalist Jim Corbett
2	Gangotri National Park	Uttarkashi	The birds and animals usually found in Gangotri National Park are Bulbul, Doves, Himalayan Barbet, Ibex, Parakeet, Partridges, Pheasants, Pigeons, Serow, Snow

			Leopard, Thar and Tiger.
3	Govind National Park	Uttarkashi	Fauna in this area include the black bear, the brown bear, common leopard, serow, golden eagle, bearded vulture, snow cock, steppe eagle and the black eagle.
4	Nanda Devi National Park	Chamoli	The entire park lies at an elevation of more than 3,500 m (11,500 ft) above mean sea level. The National Park was inscribed a World Heritage Site by UNESCO in 1988. It was later expanded and renamed as Nanda Devi and Valley of Flowers National Parks in 2
5	Rajaji National Park	Haridwar	Fauna. Rajaji National Park is predominantly formed from dense green jungles, and this environment forms a habitat for a number of animals. The park is at the northwestern limit of distribution for both elephants and tigers in India. The park is most renowned for its elephants.

[Take Free SSC CGL Mock Test](#)

6	Valley of Flowers National Park	Chamoli	This richly diverse area is also home to rare and endangered animals, including the Asiatic black bear, snow leopard, musk deer, brown bear, red fox and blue sheep.
---	---------------------------------	---------	--

WEST BENGAL

1	Buxa National Park	Northern west bengal	
2	Gorumara National Park	Jalpaiguri	Great Indian One horned Rhino
3	Jaldapara National Park	Jalpaiguri	Protection of great indian rhinoceros
4	Neora Valley National Park	Kalimpong	It is famous for the virgin forest patch and its unique biodiversity. The National Park enjoys the distinction of being situated over one of the oldest Reserve Forest in India.
5	Singalila National Park	Darjeeling	Aside from the red panda, Singalila National Park is home to many other fascinating mammals including barking deer, yellow-throated marten, Himalayan black bear, clouded leopard, black panther, leopard, Himalayan serow, pangolin and offers good chances of seeing leopard cat.
6	Sunderban National Park	South 24 parganas	Sundarban mangrove

			<p>forest is the single largest home of the Royal Bengal Tiger(<i>Panthera tigris</i>). Sundarban is also the only mangrove forest in the world having the tiger as its indigenous population</p>
--	--	--	---

Important Notes:

- Total number of National Parks in India – 103
- Total number of Tiger Reserves in India – 50
- Total number of Elephant reserves in India – 32
- Total number of Wildlife Sanctuaries in India – 543
- Total number of Biosphere reserves in India – 18
- Total number of Marine National Park and Water Sanctuaries in India – 5

Important Policies:

- | | | |
|---------------------------|---|------------|
| a) National Forest Policy | - | 1952, 1988 |
| b) Project Tiger | - | 1973 |
| c) Project Elephant | - | 1992 |
| d) Project Crocodile | - | 1975 |
| e) Project Dolphin | - | 2008 |

(Source: <http://wiienvs.nic.in>)

[Take Free SSC CGL Mock Test](#)

Download or Install our App here : <https://play.google.com/store/apps/details?id=in.cracku.app&hl=en>

Download SSC CGL Question Papers here : <https://cracku.in/ssc-cgl-previous-papers>

Download SSC CHSL Question Papers here : <https://cracku.in/ssc-chsl-question-papers>

Get Free Exam Updates

Whatsapp “Exam” to 7661025557

[Join Daily Quiz Telegram Group](#)

Link to [Free YouTube GK Classes](#)

[Free Exam Material Telegram Group](#)